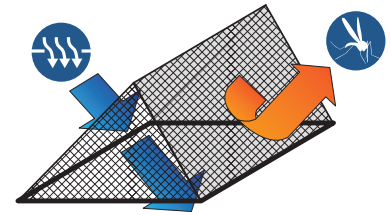
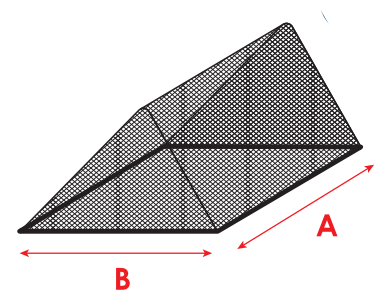


# MOSQUITO NET THROW-OVER

## for regular hatches

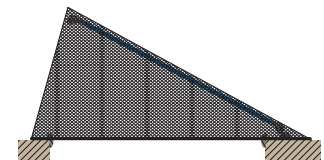


### MEASURE



A x B 620 x 620 mm (24" x 24")

### SECTION VIEW



Keeps mosquitoes away from the cabin. Throw or hang the mosquito net at the hatch. Now with a new affordable solution with lead band. The weight band (150g/m) keeps the mosquito net in place. Works perfectly in combination with roller blinds. The mosquito net comes with a convenient storage bag.

- Fast mounting - throw-over
- Works with roller blinds
- Installs from the outside
- Ventilates the boat
- Heavy weight band keeps the net in place
- Keeps out mosquitos, gnats, sand flies, No-See-Ums, wasps etc.

## PRODUCT FACTS

- 620 x 620 mm (24" x 24")
- BLACK POLYESTER NET
- 360 gram (12 oz)
- STORAGE BAG 260x50 mm (10"x2")
- Art nr 1710



## MOSQUITO NET / BUG SCREEN FOR HATCHES



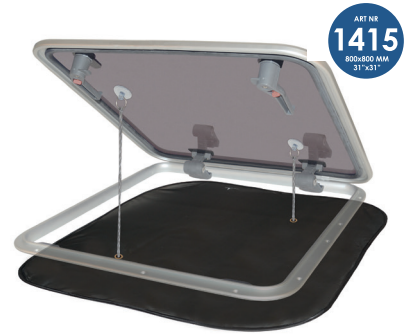
HATCHES – SMALL

- ☐ Cut out < 300 x 300 mm (12" x 12")
- ☐ 350 x 350 mm (14" x 14")



HATCHES – REGULAR

- ☐ Cut out < 520 x 520 mm (20" x 20")
- ☐ 600 x 600 mm (24" x 24")



HATCHES – LARGE

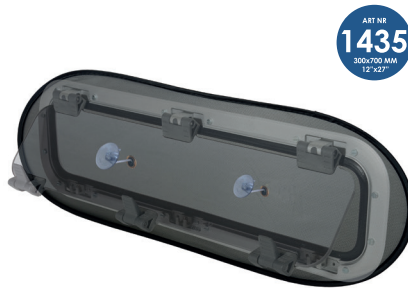
- ☐ Cut out < 720 x 720 mm (28" x 28")
- ☐ 800 x 800 mm (31" x 31")

## PORTLIGHTS



PORTLIGHTS – SMALL

- ☐ Cut out < 180 x 430 mm (7" x 17")
- ☐ 230 x 490 mm (10" x 19")



PORTLIGHTS – LARGE

- ☐ Cut out < 200 x 650 mm (7¾" x 25½")
- ☐ 300 x 700 mm (12" x 27")



COMPANIONWAY

- ☐ Opening < 850 x 1750 mm (33" x 69")
- ☐ 900 x 1800 mm (35" x 71")

## THROW-OVER NET FOR HATCHES



HATCHES – SMALL

- ☐ 360 x 360 mm (14" x 14")



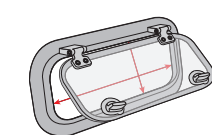
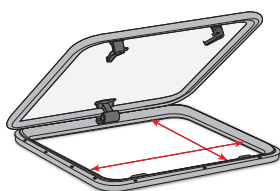
HATCHES – REGULAR

- ☐ 620 x 620 mm (24" x 24")



HATCHES – LARGE

- ☐ 720 x 720 mm (28" x 28")



**INTERIOR SET UP**  
Measure the hatch / portlight opening

### EXTERIOR SET UP

Measure the hatch outside

