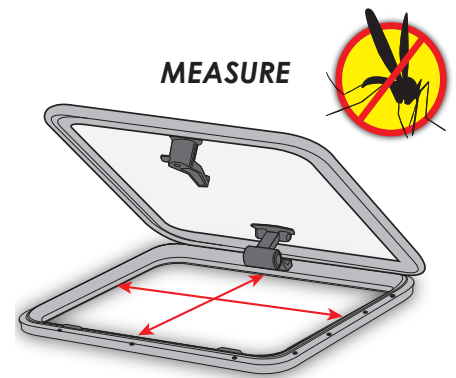
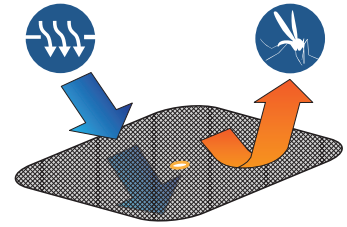
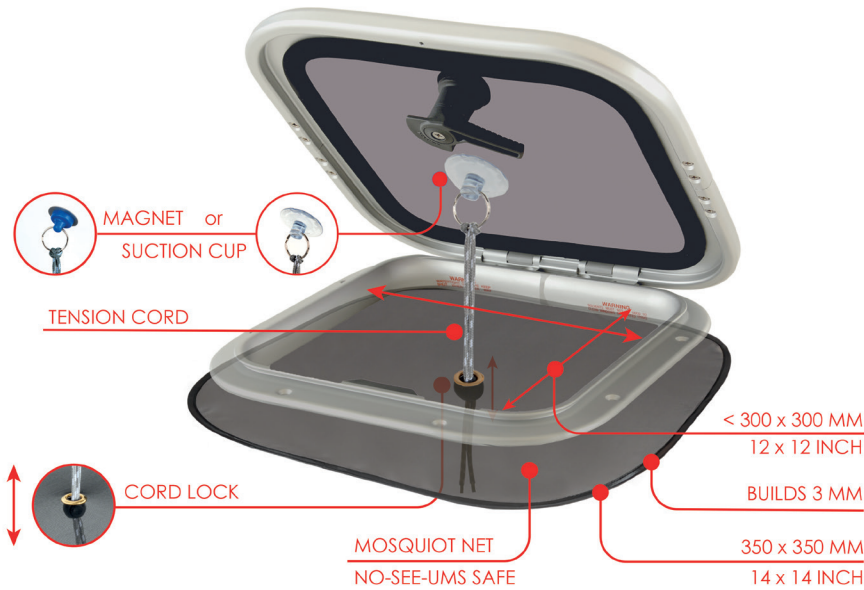


# MOSQUITO NET for small hatches



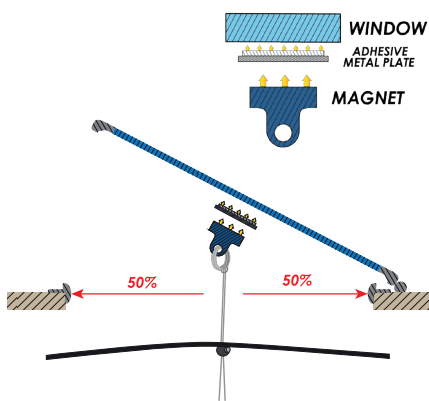
A universal sized mosquito net that fits all brands of hatches. Set up from the inside with a suction cup or magnet. The mosquito net should be larger than the "cut out" size to cover the hatch opening. It will also fit different shapes: rectangular, square and round hatches. A few products cover all sizes of standard hatches, portlights and companionways (for more sizes see back side of this fact sheet). All mosquito nets come with suction cup and magnet plus a storage bag.

## MAGNET MOUNTING

The new way to fasten a mosquito net portlight. A small metal plate is taped to the hatch with double sided tape. The magnet can easily be placed on the metal plate. Suction cup and magnet solution is included in every package.

- Pop up = 5 sec. mounting
- Fast mounting with suction cup or magnet
- Fits all brands of hatches
- Mounts from the inside
- Works on flushed hatches
- Dence net – keeps out mosquitoes, sand flies, No-See-Ums, gnats, wasps etc.

## SECTION VIEW



## MOSQUITO NET / BUG SCREEN FOR HATCHES



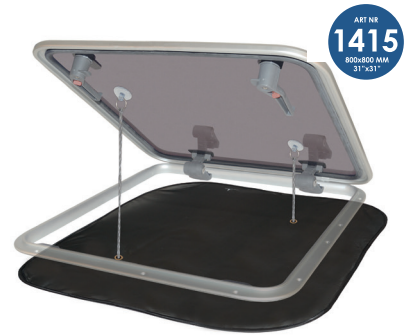
HATCHES – SMALL

- ☐ Cut out < 300 x 300 mm (12" x 12")
- ☐ 350 x 350 mm (14" x 14")



HATCHES – REGULAR

- ☐ Cut out < 520 x 520 mm (20" x 20")
- ☐ 600 x 600 mm (24" x 24")



HATCHES – LARGE

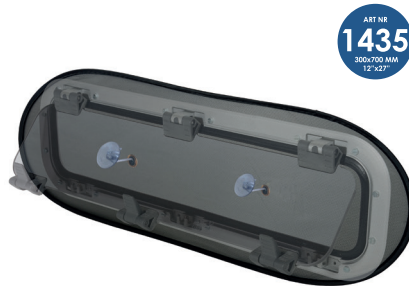
- ☐ Cut out < 720 x 720 mm (28" x 28")
- ☐ 800 x 800 mm (31" x 31")

## PORTLIGHTS



PORTLIGHTS – SMALL

- ☐ Cut out < 180 x 430 mm (7" x 17")
- ☐ 230 x 490 mm (10" x 19")



PORTLIGHTS – LARGE

- ☐ Cut out < 200 x 650 mm (7¾" x 25½")
- ☐ 300 x 700 mm (12" x 27")



COMPANIONWAY

- ☐ Opening < 850 x 1750 mm (33" x 69")
- ☐ 900 x 1800 mm (35" x 71")

## THROW-OVER NET FOR HATCHES



HATCHES – SMALL

- ☐ 360 x 360 mm (14" x 14")



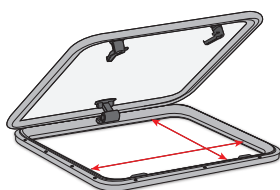
HATCHES – REGULAR

- ☐ 620 x 620 mm (24" x 24")

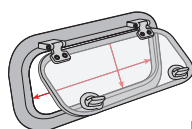


HATCHES – LARGE

- ☐ 720 x 720 mm (28" x 28")



**INTERIOR SET UP**  
Measure the hatch / portlight opening



**EXTERIOR SET UP**  
Measure the hatch outside

